

New focus. New future.

Company Presentation

May 2011



TECTONIC

Important Notice and Competent Persons Statement

This presentation contains certain statements which may constitute "forward-looking statements". Such statements are only predictions and are subject to inherent risks and uncertainties which could cause actual values, results, performance achievements to differ materially from those expressed, implied or projected in any forward-looking statements.

No representation or warranty, express or implied, is made by Tectonic that the material contained in this presentation will be achieved or prove to be correct. Except for statutory liability which cannot be excluded, each of Tectonic, its officers, employees and advisers expressly disclaims any responsibility for the accuracy or completeness of the material contained in this presentation and excludes all liability whatsoever (including in negligence) for any loss or damage which may be suffered by any person as a consequence of any information in this presentation or any error or omission there from. Tectonic accepts no responsibility to update any person regarding any inaccuracy, omission or change in information in this presentation or any other information made available to a person nor any obligation to furnish the person with any further information.

The information in this presentation that relates to mineral resources and exploration results are based on information compiled by Mr Bruce Armstrong who is a corporate member of the Australian Institute of Geoscientists. Any statement herein, direct or implied as to a potential deposit is conceptual in nature and a reference to the potential and not to any JORC compliant Mineral Resource unless specified. Mr Armstrong is a full time employee of the company and has sufficient experience which is relevant to the style of mineralisation under consideration to qualify as a Competent Person as defined in the 2004 Edition of the JORC code. Mr Armstrong gives his consent to the inclusion of the matters based on the information in the form and context in which it appears.



■ Company Overview

■ Phillips River - A robust long life project!

- **Gross revenue LOM ~ \$1billion**
- **Cashflow pretax over LOM ~ \$224M**
- **IRR ~ 26% pretax, NPV (8%) ~ \$72.5M**

■ Significant Exploration Upside

■ The Plan Ahead



Company Overview

Directors

Hamish Bohannan	Chairman
Jason Stirbinskis	MD
Andrew Ellison	Non Exec
Joe Totaro	Non Exec.
Tony Martin	Non Exec.

Capital Structure

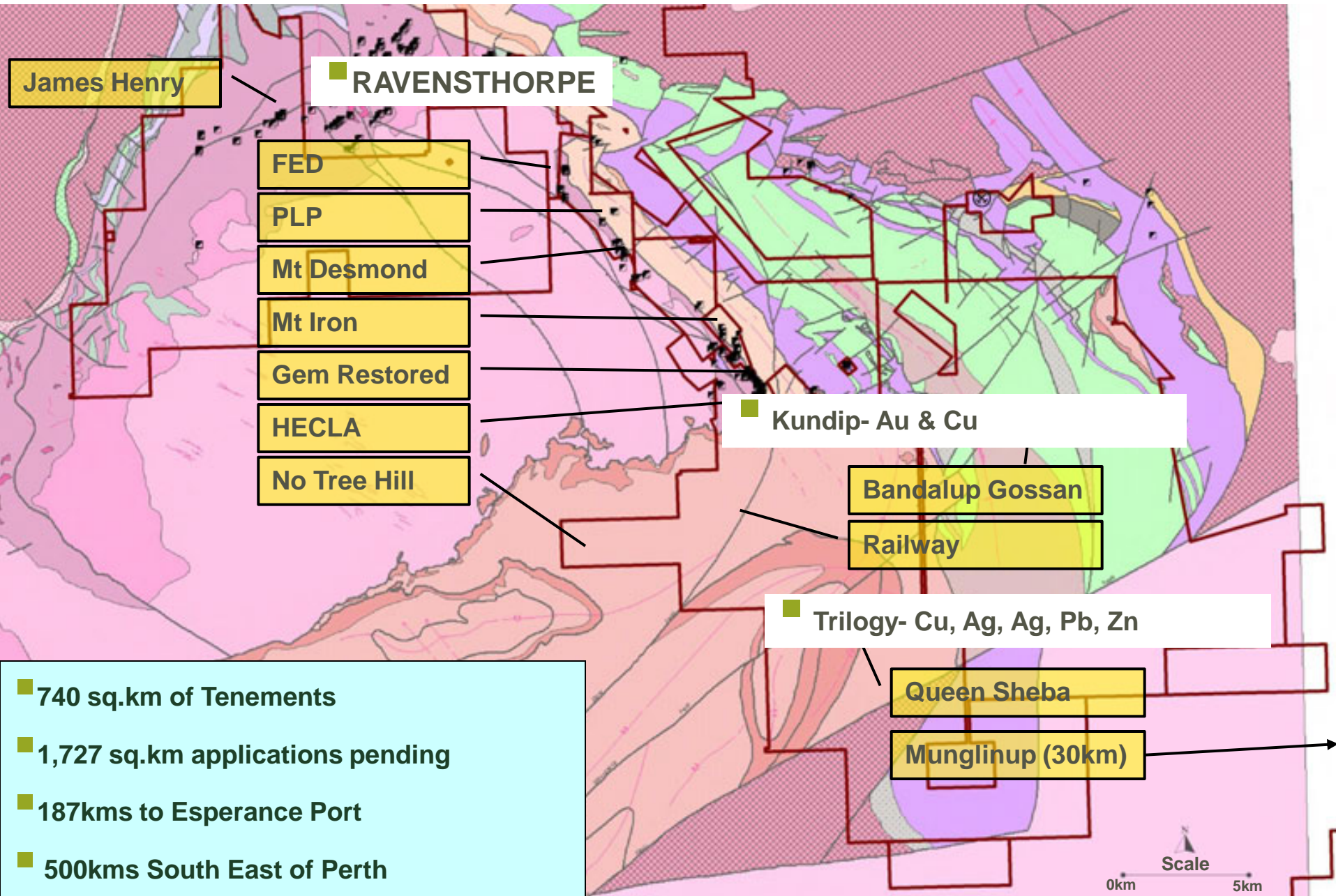
ASX code	TTR
Issued shares	465M
Options	21.5M
Market capitalisation	\$33M

Key shareholders

Jabiru Metals	6.5%
Royale Blue	4.6%
Sanpoint	3.8%
CTS Funds	3.7%
Merrill Lynch Nom	2.2%



Project Life is likely to extend as we explore and realise the potential of our numerous additional targets



The DFS is built on Reserves of Trilogy and Kundip only.

Mine	Class'n	Mt	Au (g/t)	Ag (g/t)	Cu (%)	Pb (%)	Zn (%)
Trilogy pit	Proved	0.3	2.2	45	0.4	0.2	0.0
Trilogy Pit	Probable	4.04	0.8	57	1.1	2.7	1.6
Trilogy U/G	Probable	0.28	1.0	26	1.3	1.9	1.8
Subtotal Trilogy Ore Reserve		4.63	0.9	55	1.1	2.5	1.5
Flag Pit	Probable	0.21	4.0	3.5	0.50		
Harbour View Pit	Probable	0.20	3.2	1.5	0.38		
Kaolin Pit	Probable	1.27	2.8	1.7	0.18		
Flag U/G	Probable	0.24	5.0	3.5	0.45		
Harbourview U/G	Probable	0.75	3.5	4.0	0.68		
Kaolin U/G	Probable	0.14	4.4	3.2	0.28		
Subtotal Kundip Ore Reserve		2.81	3.4	2.7	0.38	0.00	0.00
Subtotal Proved	Proved	0.30	2.2	45	0.35	0.15	0.01
Subtotal Probable	Probable	7.13	1.8	35	0.82	1.62	0.97
Total PRP Ore Reserve		7.44	1.8	35	0.80	1.56	0.93

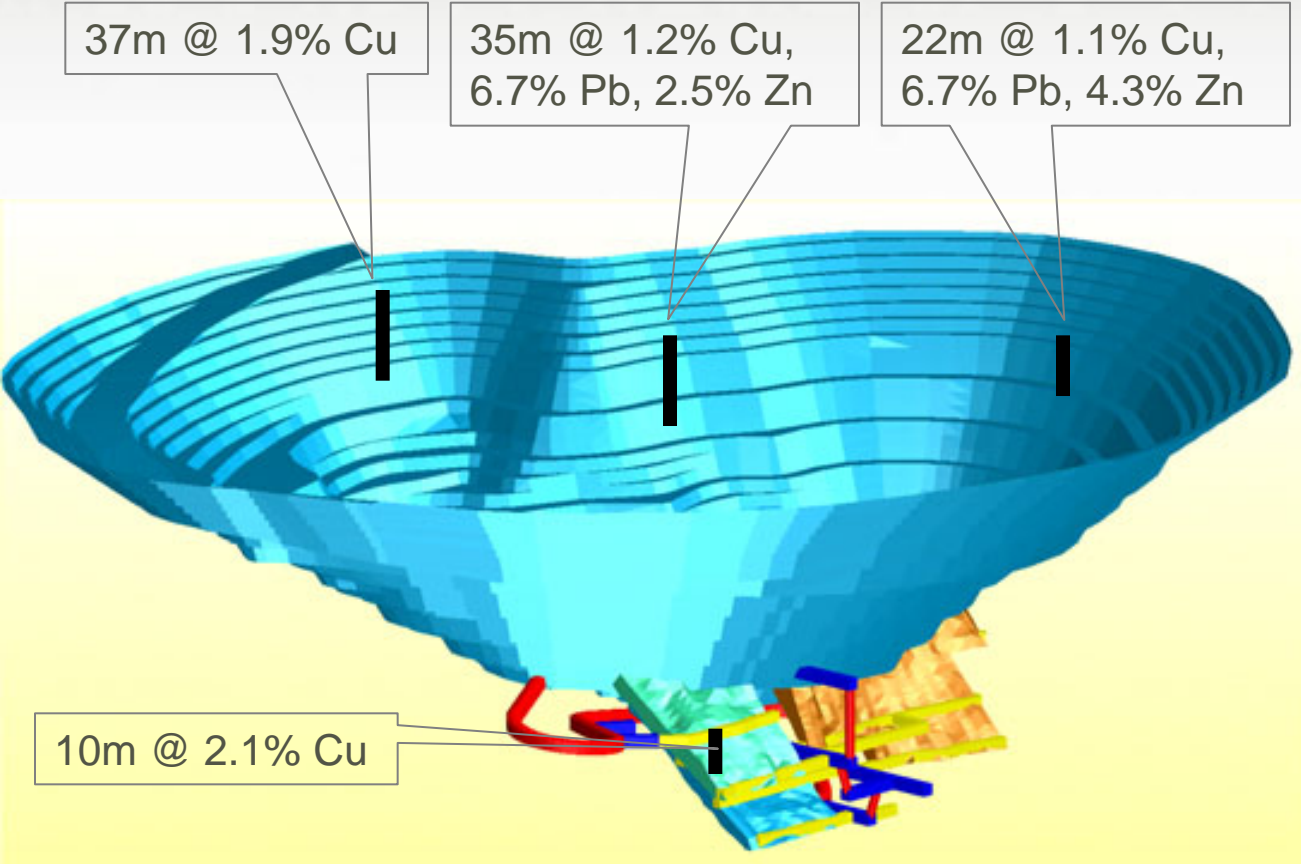
Feed	Mt	Au (g/t)	Ag (g/t)	Cu (%)	Pb (%)	Zn (%)
PM Feed	0.6	1.61	60	0.1	0.2	0.0
Cu Feed	1.8	0.93	39	1.2	0.5	0.2
Poly Feed	2.2	0.59	66	1.2	4.8	3.0
Total	4.63	0.9	55	1.1	2.5	1.5

Trilogy Reserve by process route

Both Trilogy and Kundip remain open at depth



Phillips River Project- Trilogy

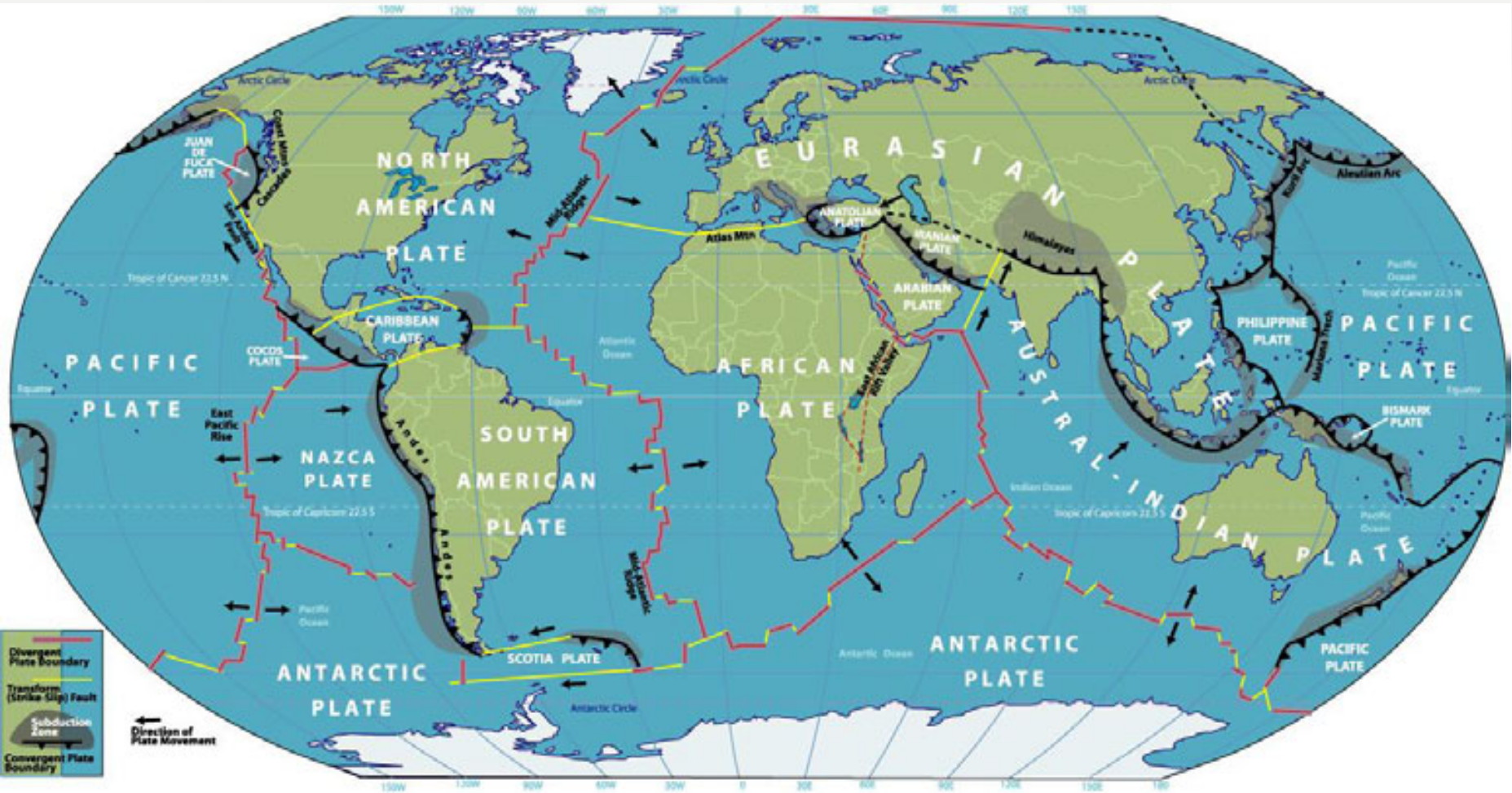


- Polymetallic deposit producing -
 - Gold silver
 - Copper cons
 - Bulk base metal cons
- On company owned freehold farmland
- Owner operator open pit, contracted U/G
- L.O.M ~ 5.5yrs on current Reserve
- Open at depth

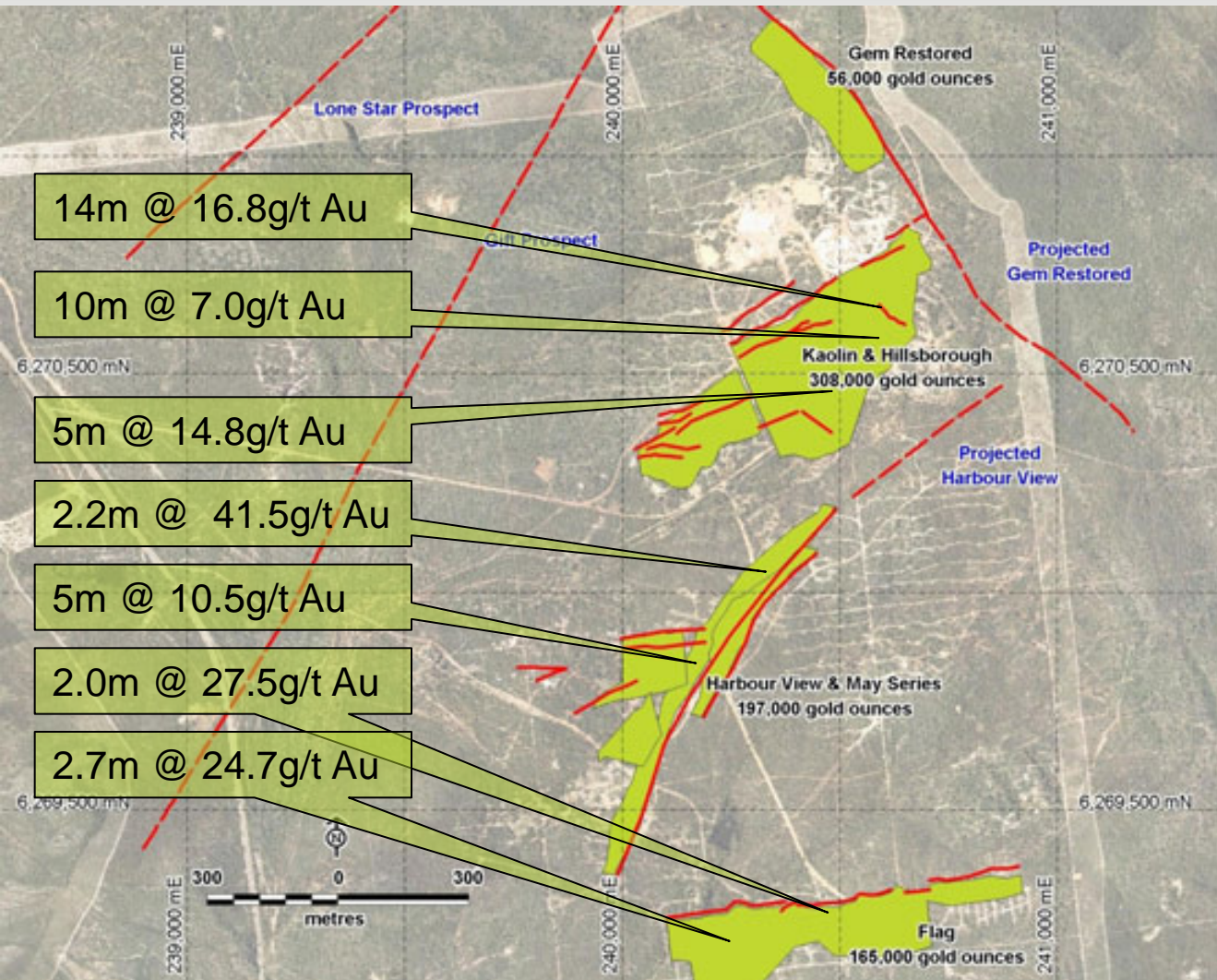


Trilogy is a SEDEX deposit, which tend to occur in clusters

SEdimentary EXhaltive deposits are associated with diverging plate boundaries and are rich in copper, gold, silver, lead and zinc



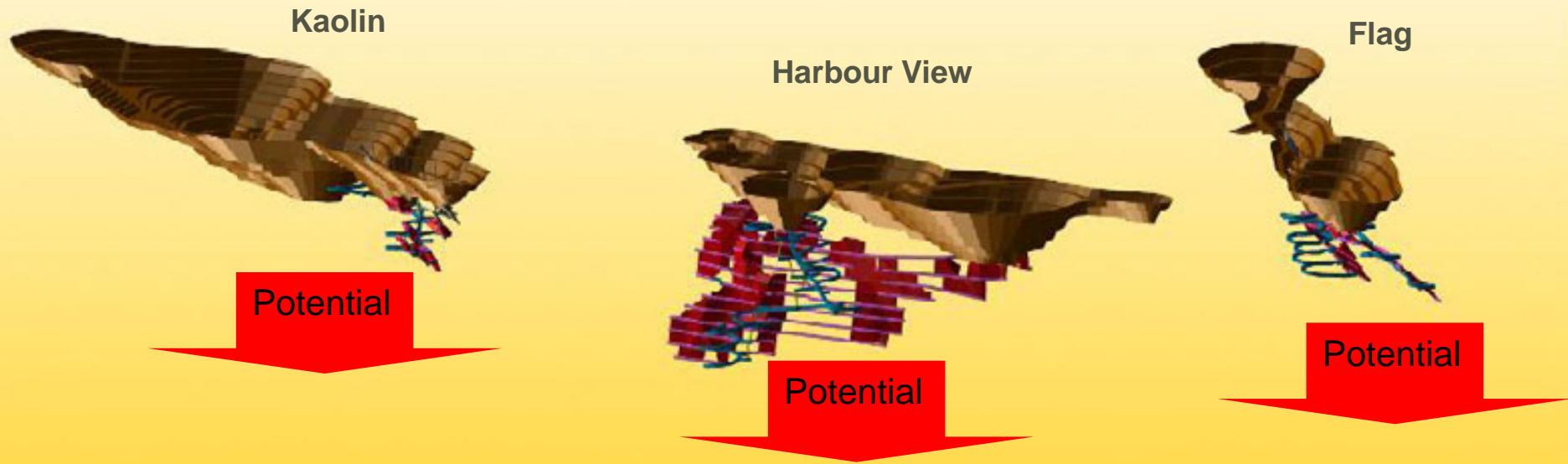
Phillips River Project- Kundip



- 10kms from proposed Trilogy plant
- Gold, Silver, Copper deposit producing
 - Gold / silver dore
 - Copper conc
 - Copper precipitate
- Resource of 727,000oz gold and considerable copper



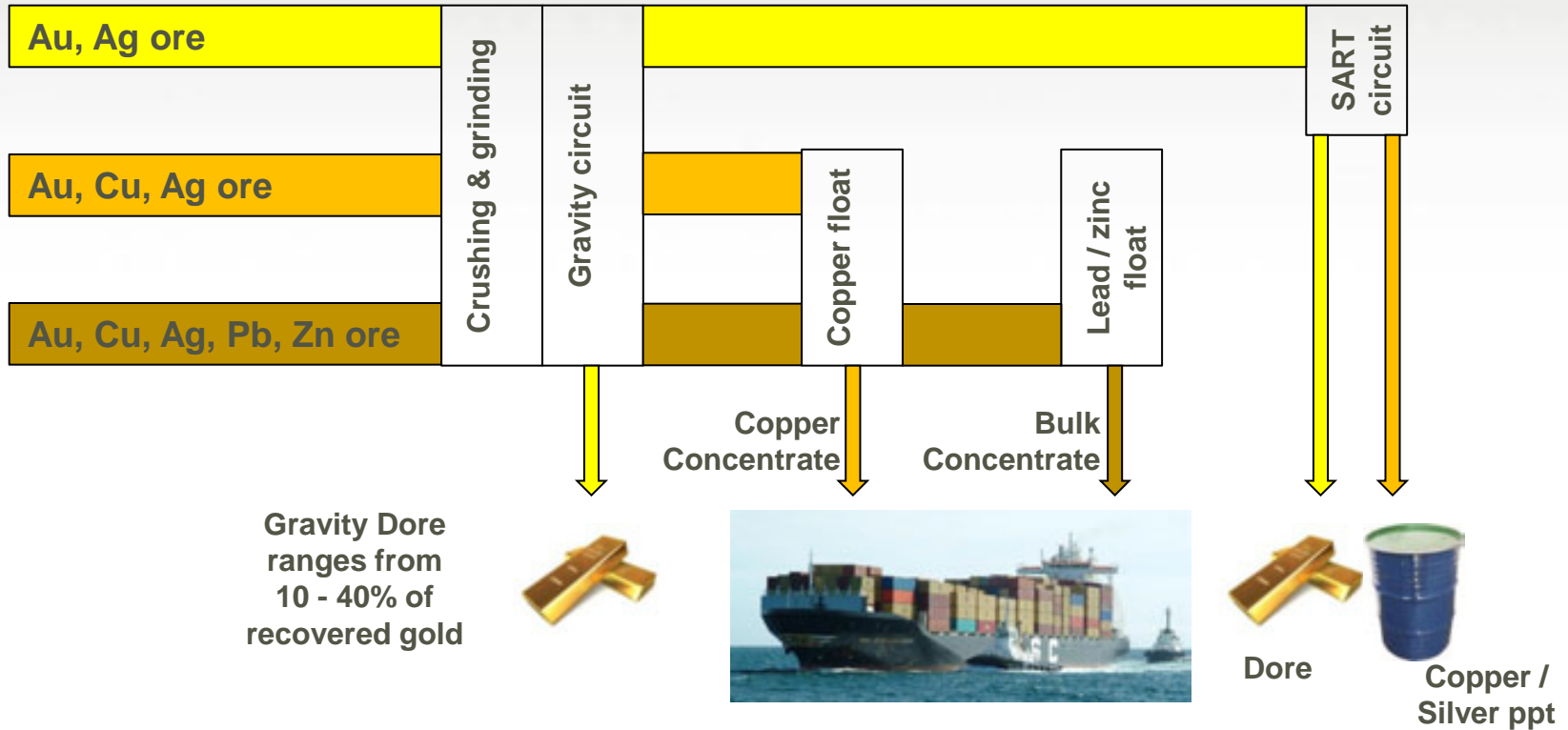
Kundip – Mining



- Owner operator open pit and U/G
- L.O.M ~ 4.5yrs on current Reserve
- Excellent near mine prospectivity
- Underground mines limited in depth to -200m vertical, further drilling will extend deeper



Phillips River Processing Flowsheet



Robust Flow Sheet allows multiple products to be produced-, precious metal concentrates, copper and bulk lead zinc concentrates, precious metal dore and high value copper precipitate



Phillips River Project- DFS Summary

Financial Analysis	
Capital cost	~\$133M
Total Revenue	~\$1.05Billion
Life of Mine (LOM)	10 years
Gross operating cost over LOM	\$589M
Cashflow before tax over LOM	\$224M
NPV (8%)	\$72.4M
IRR pretax	26%
IRR after tax and gearing	22.4%
Payback	5 years
Development time	15 months
Operating cost /t ore (open & ug)	\$92

Revenue Split	\$AUD	%
Silver	\$99,007,989	9.39%
Gold	\$446,813,299	42.39%
Copper	\$382,475,610	36.29%
Lead	\$56,085,249	5.32%
Zinc	\$69,580,228	6.60%
TOTAL	\$1,053,962,375	100.00%

Key Assumptions	
Gold price over LOM	1350/oz
Silver price over LOM	25/oz
Copper price over LOM	9800/t
Zinc price over LOM	2400/t
Lead price over LOM	2300/t
Assumed debt	\$40M
Assumed equity / hedging	\$100M
Diesel power generation	
Shipping of cons via Esperance port to Asian/Chinese smelters	



Phillips River Project- DFS Summary

Period Ending - Dec xx		2011	2012	2013	2014	2015	2016	2017	2018	2019	2020	2021	2022	Total
Payable Metal														
Silver	oz	-	106,403	1,171,633	791,072	572,978	559,699	329,834	299,430	37,335	39,446	50,389	2,101	3,960,320
Gold	oz	-	5,465	16,893	7,968	6,109	10,004	7,759	73,367	70,349	65,043	61,524	6,491	330,973
Copper	t	-	5	5,158	5,768	6,488	5,193	6,978	3,478	1,370	2,095	2,448	46	39,028
Lead	t	-	-	2,734	5,817	6,293	3,579	3,827	1,119	-	-	-	-	23,369
Zinc	t	-	-	2,601	6,309	8,277	4,636	5,766	2,663	-	-	-	-	30,252
Revenue														
Revenue	A\$M	-	10	115	116	120	98	110	149	109	109	108	9	1,054
Royalties and TC & RC	A\$M	-	0	11	16	17	12	15	9	4	5	5	0	94
Total Project Revenue	A\$M	-	10	104	100	104	86	95	140	105	104	103	9	960
Costs														
Total Operating Costs	A\$M	-	13	53	53	52	56	79	77	70	70	60	7	589
Capital Expenditure	A\$M	27	98	1	-	1	0	4	1	0	0	0	0	133
Total Project Costs	A\$M	27	110	54	53	53	56	82	78	70	70	60	8	721
Project Cash Flow Before Tax	A\$M	(27)	(102)	49	46	49	28	11	61	34	33	41	0	224
Tax	A\$M	-	-	-	9	11	4	-	10	6	6	9	-	55
Net Cash Flow Before Debt and E	A\$M	(27)	(102)	49	37	38	24	11	52	28	27	32	0	169
Cummulative Cash Flow	A\$M	(27)	(129)	(80)	(43)	(5)	19	31	82	110	137	169	169	169

- Payback year 6
- Relatively uniform revenue generation
- Large +ve cashflow early years to offset upfront capital



Phillips River Project could be the first wind powered mine!

- Power required 6 – 7 MW
- Model assumes gen sets

However

- Wind generation is a possibility



Exploration – Spoilt for choice!

	Deposit	Tonnes (000)	Au (g/t)	Ag (g/t)	Cu (%)	Pb (%)	Zn (%)	Comments
NON DFS RESOURCES	Gem Restored	331	5.3	5.0	0.5			100% Tectonic
	Queen Sheeba	451	1.7	3.0	0.0			100% Tectonic
	Mt Desmond	324	0.9	2.2	2.1			100% Tectonic
	Subtotal	1105	2.5	3.3	0.8			
TECTONIC EXPLORATION TARGETS	James Henry	Potential copper , gold mineralisation						100% Tectonic
	Mt Iron	Potential Kundip (Kaolin deposit) type copper, gold mineralisation						Binding H of A in place
	Bandalup Gossan	Potential Gold, zinc, lead mineralisation						Farm in to 70%
	PLP / FED	Potential copper, gold mineralisation						100% Tectonic
	Gift	Potential copper, gold mineralisation						100% Tectonic
	Railway Deeps	Potential copper, gold mineralisation						100% Tectonic
	No Tree hill	Potential Trilogy type polymetallic mineralisation						100% Tectonic
	Hecla	Potential copper mineralisation						100% Tectonic
Munglinup	Regional geochem survey planned in search of tropicana style mineralisation						Application with Authorities	



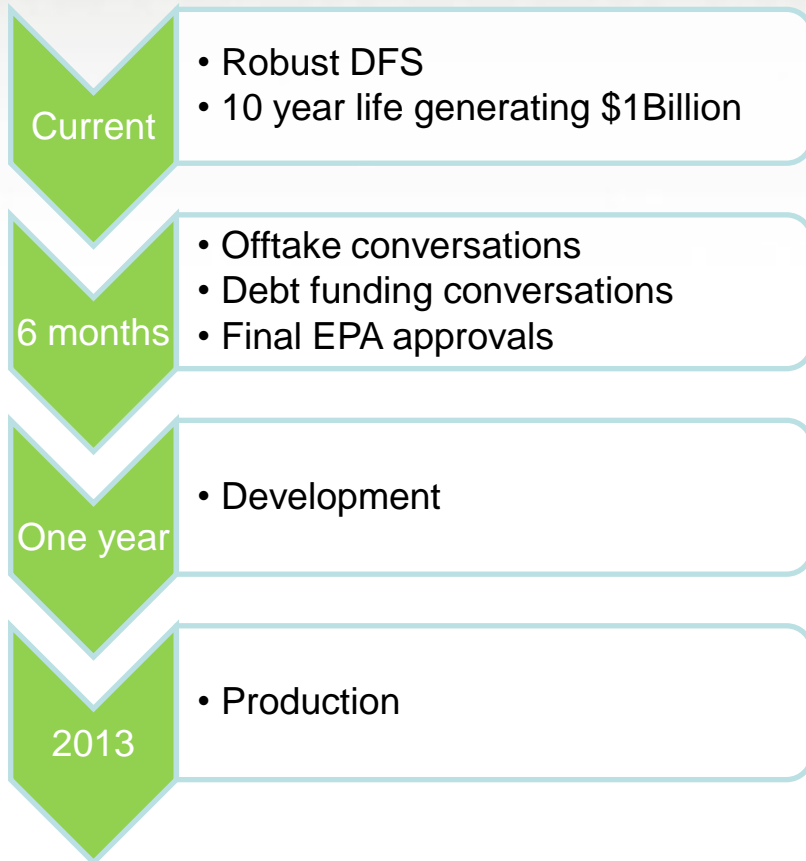
Exploration – Spoilt for choice and a good start

	Deposit	Comments	
8m @ 18.8g/t Au and 0.3% Cu 8m @ 3.71g/t Au and 0.3% Cu 2m @ 4.72g/t Au and 0.3% Cu 4m @ 3.32g/t Au and 0.45 Cu	Gem Restored	100% Tectonic	4m @ 5.4 g/t Au
	Queen Sheeba	100% Tectonic	4m @ 1.3 g/t Au
	Mt Desmond	100% Tectonic	3m @ 4.3 g/t Au and 11m @ 0.7g/t Au 10m @ 1.7 g/t Au and 4m @ 1.2 g/t Au
3m @ 13.8% Cu and 4.3g/t Au 6m @ 2.45% Cu and 9.7g/t Au 5m @ 2.04% Cu and 1.0g/t Au	Subtotal		
	James Henry	100% Tectonic	
	Mt Iron	Binding H of A in place	14m @ 8.4g/t Au 4m @ 11.95g/t Au 13m @ 5.29g/t Au Metana Minerals 1998
10m @ 1g/t Au 26m @ 1.75% Pb 17m @ 0.83% Cu 6km long soil anomaly	Bandalup Gossan	Farm in to 70%	
	PLP / FED	100% Tectonic	
4m @ 2.8% Cu and 1.1g/t Au 2m @ 2.8% Cu and 2.6g/t Au	Gift	100% Tectonic	10m @ 0.3% Cu 8m @ 0.24g/t Au 4m @ 0.21g/t Au
	Railway Deepes	100% Tectonic	Initial validation of overlying soil anomaly over 1km strike
	No Tree hill	100% Tectonic	Soil anomaly 800m x 150m including 652ppm Cu and 271ppb Au (stronger anomaly than Trilogy)
	Hecla	100% Tectonic	
	Munglinup	Application with Authorities	

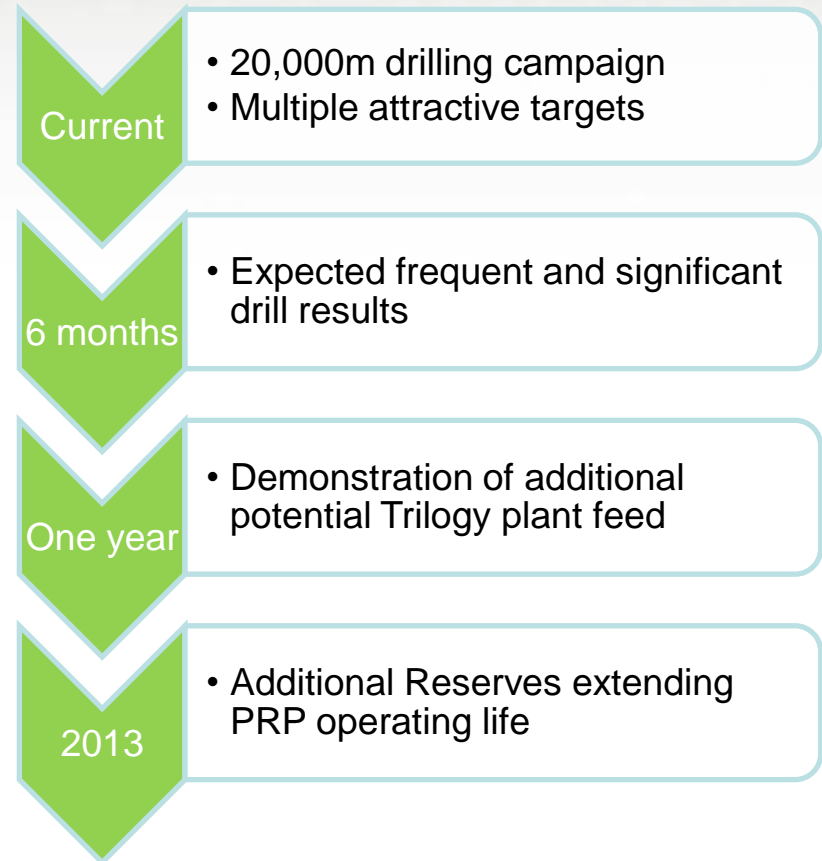


Summary and Next Steps

Philips River Project



Exploration Objectives



Thank you.

www.tectonic.com.au

Suite 46/328 Albany Highway Victoria Park WA 6100

T: 08 6250 4600

F: 08 6250 4699

Jason Stirbinskis

Managing Director

Jason.stirbinskis@tectonic.com.au

