



Golden Cross Resources

20:20

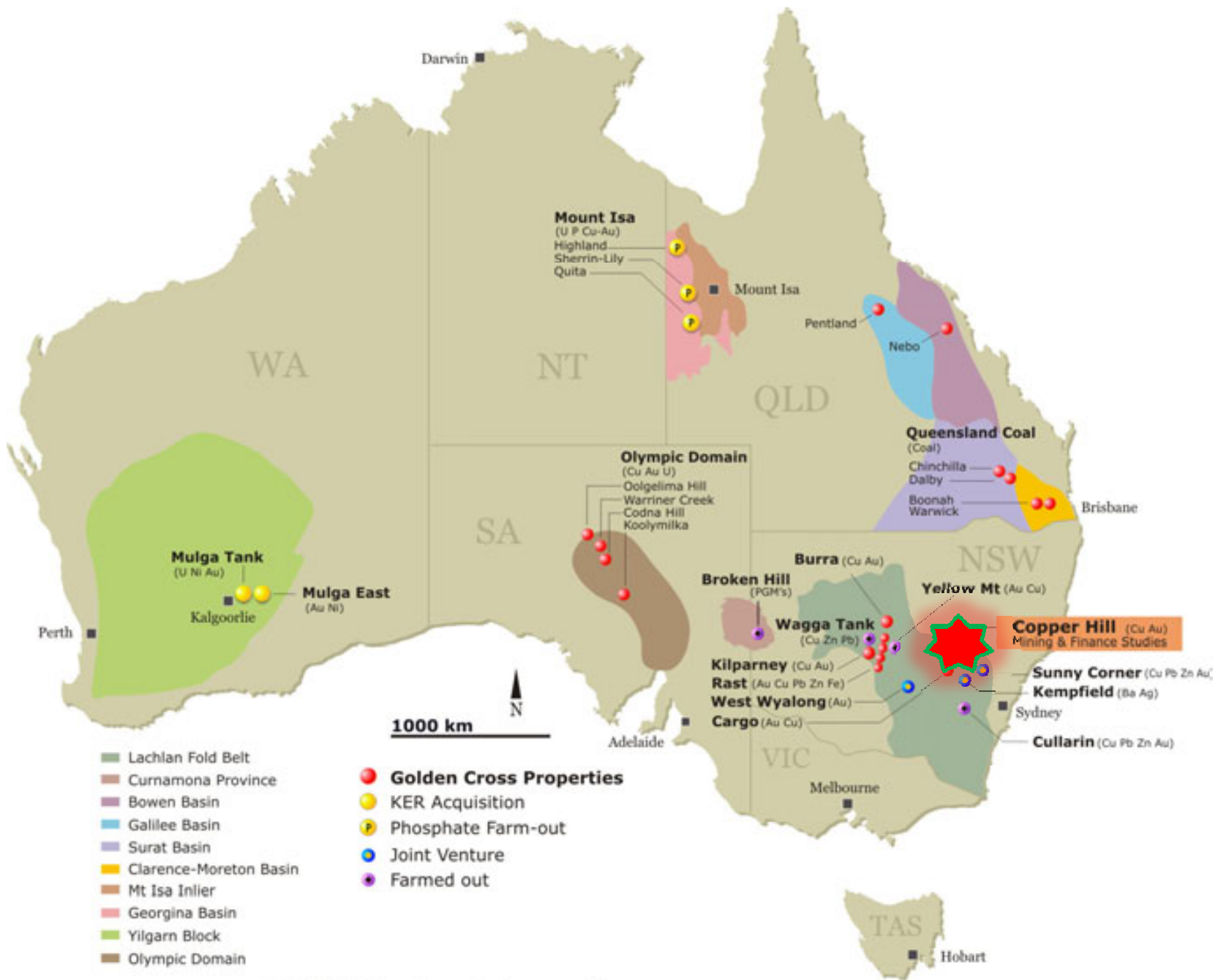
INVESTOR SERIES

Wednesday, March 9, 2011

Kim Stanton-Cook

GCR Managing Director





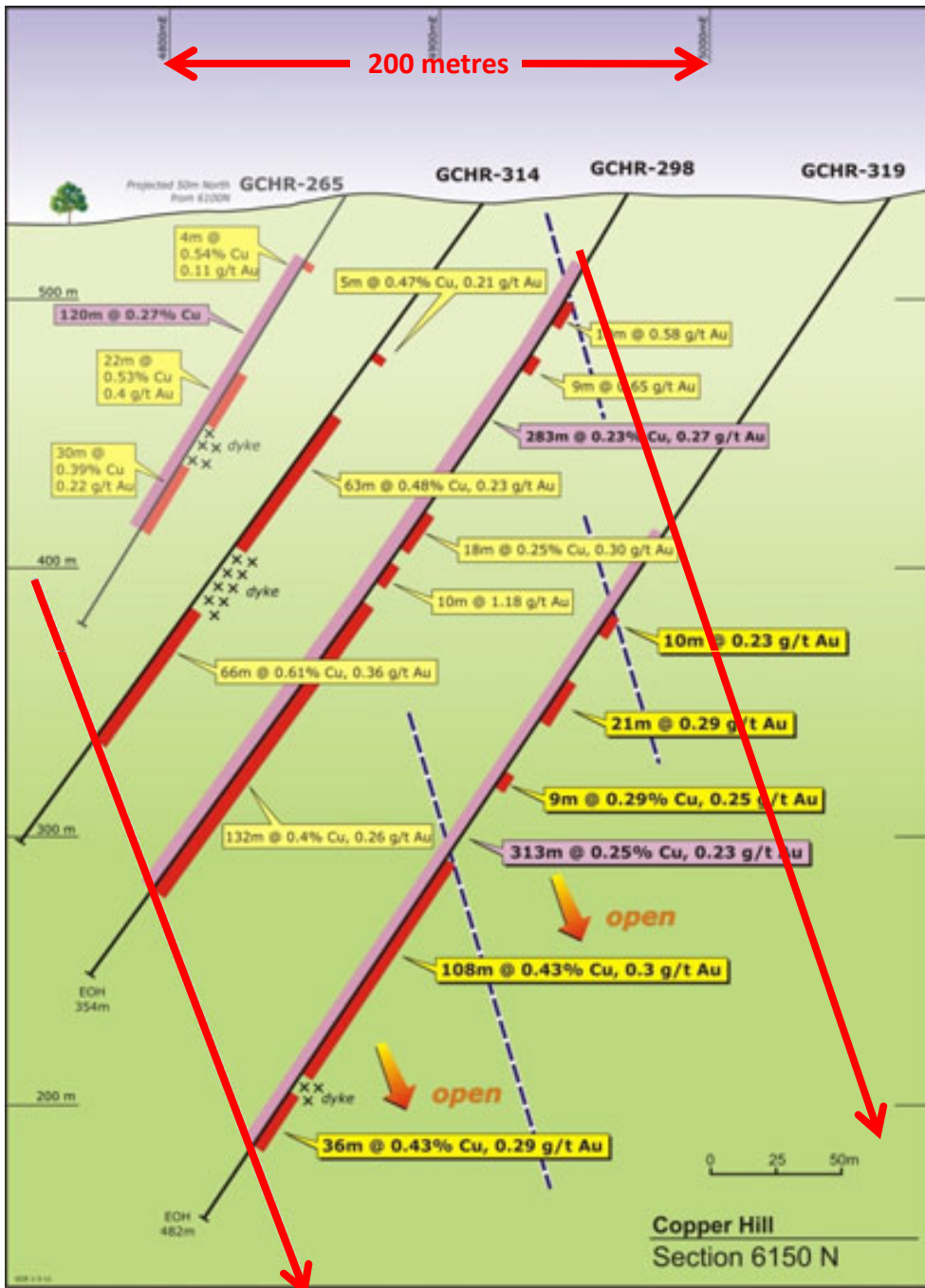
GCR Project Locations

Copper Hill Project Status

- Resources Block Model estimated by Hellman & Schofield: 173 million tonnes containing 0.53 million tonnes copper and 1.47 million ounces of gold
- Preliminary geotechnical parameters assessed
- Whittle Enterprise Optimization due end-March
- Feasibility Study Stage 1 completed in China by NERIN.
- 5 metallurgical holes. Metcon Laboratory tests producing early encouraging results
- Exploration on-going, good results from Wattle Hill and Buckley's Hill
- Oxide zone drilling completed (Excluded from >0.2% Cu Resource)

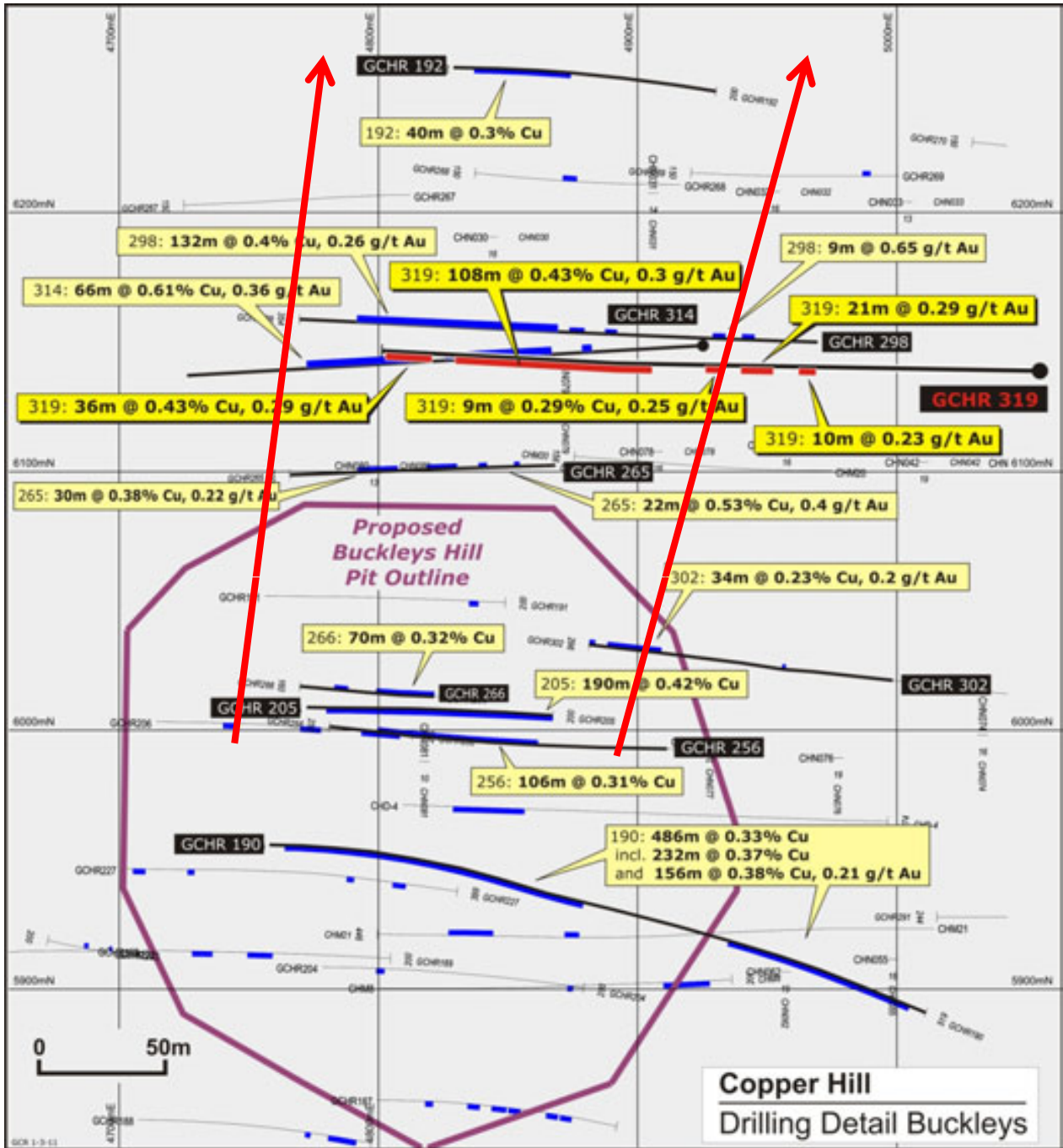
COPPER HILL DRILLING 2010 and into 2011





Buckley's Hill, Section 6150N

- Expanding zone indicated
- Copper and gold grades remain elevated and above average.
- Substantial extensions indicated along strike to the northwest
- Step-out core drilling to begin immediately.
- Cross-sections both north and south of the 6150N section are not drilled at depth.
- Sizeable increase in the resource if similar mineralization can be drilled on the 6100N and 6050N sections, as the 6000N section also provides strong encouragement.
- Strong vector to significant higher grade mineralisation at depth These will all contribute significantly to the next resource estimate due within two weeks.



6250N

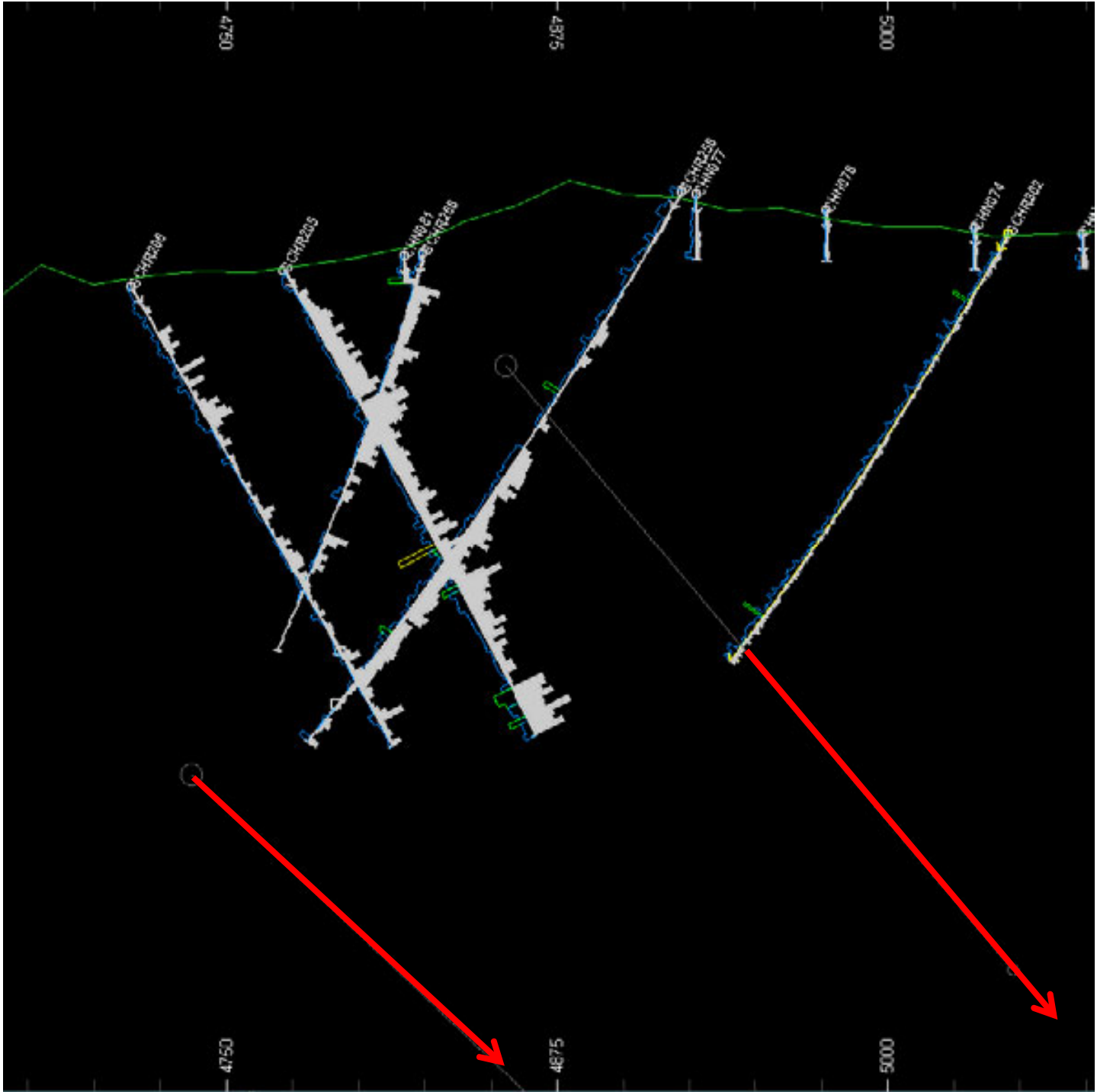
6200N

6150N

6100N

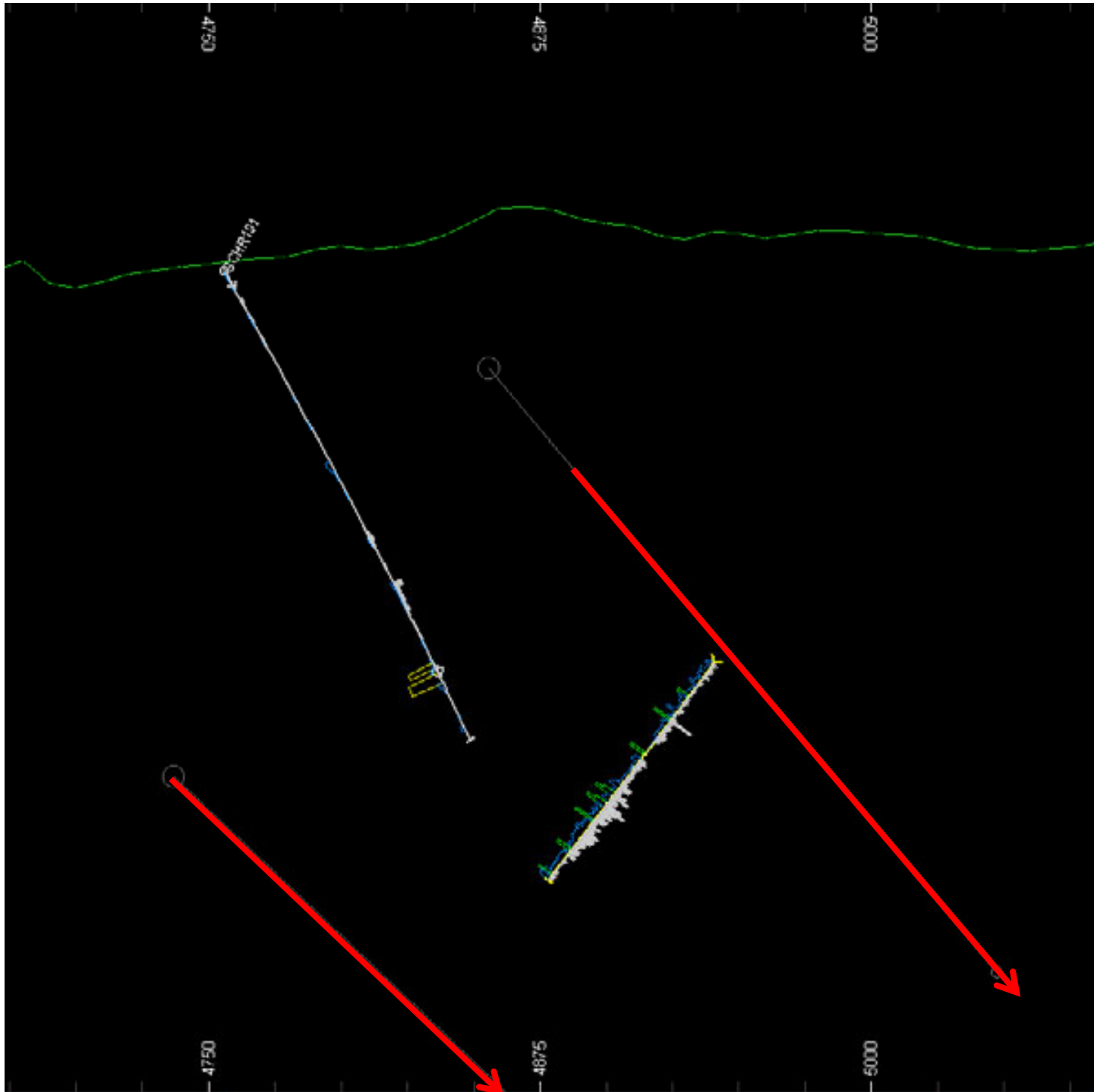
6050N

6000N

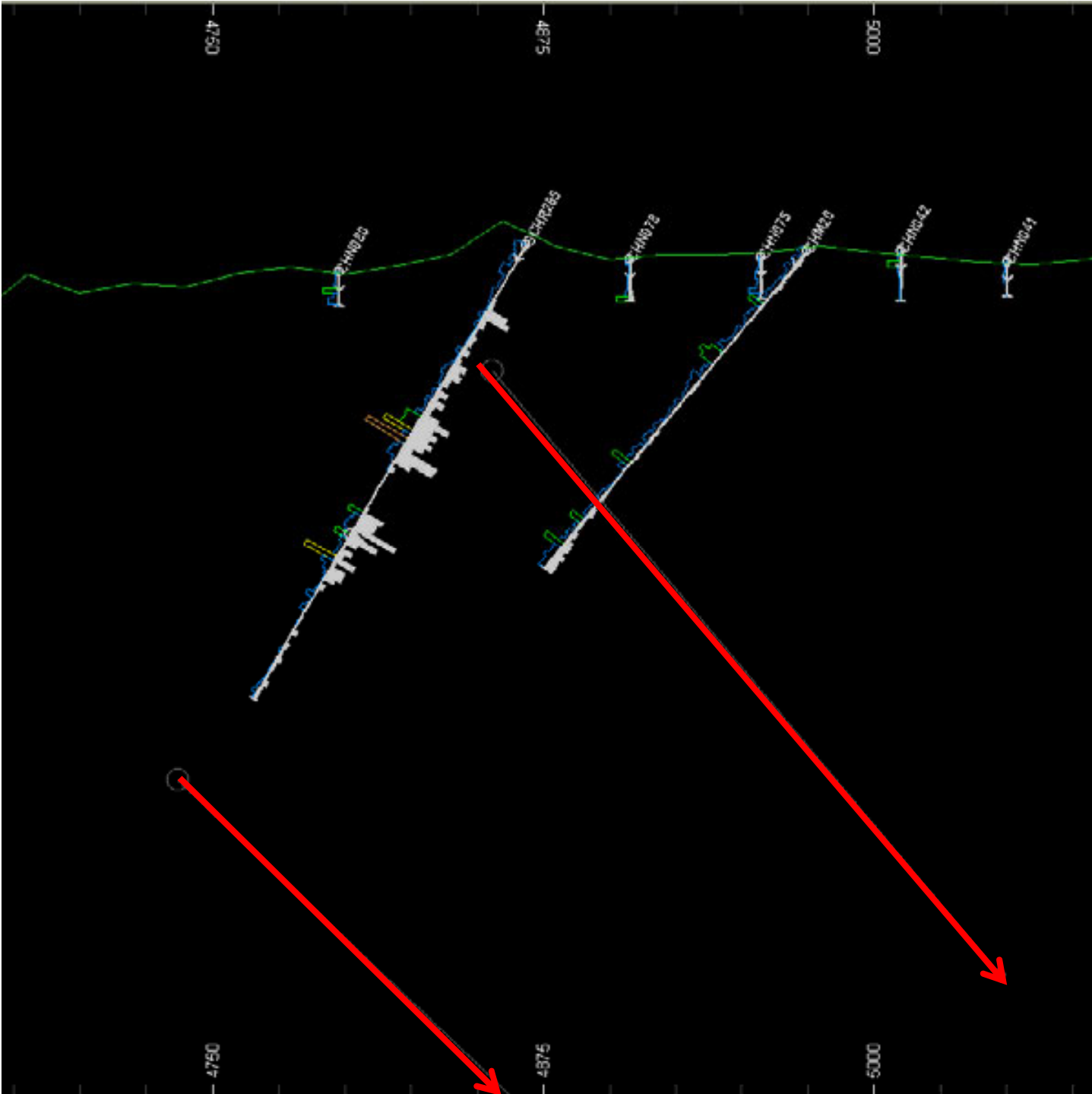


6000N

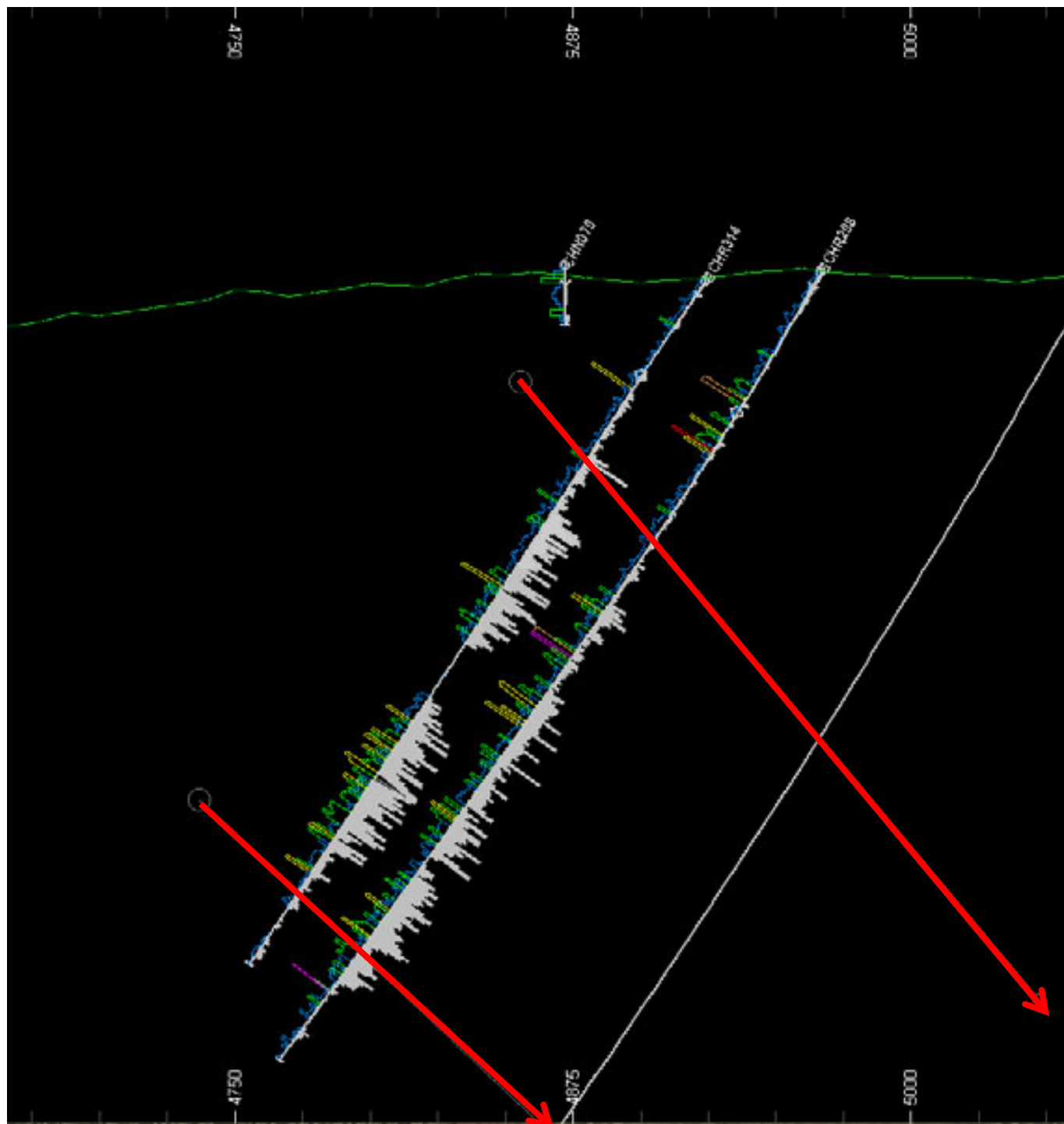
6050N



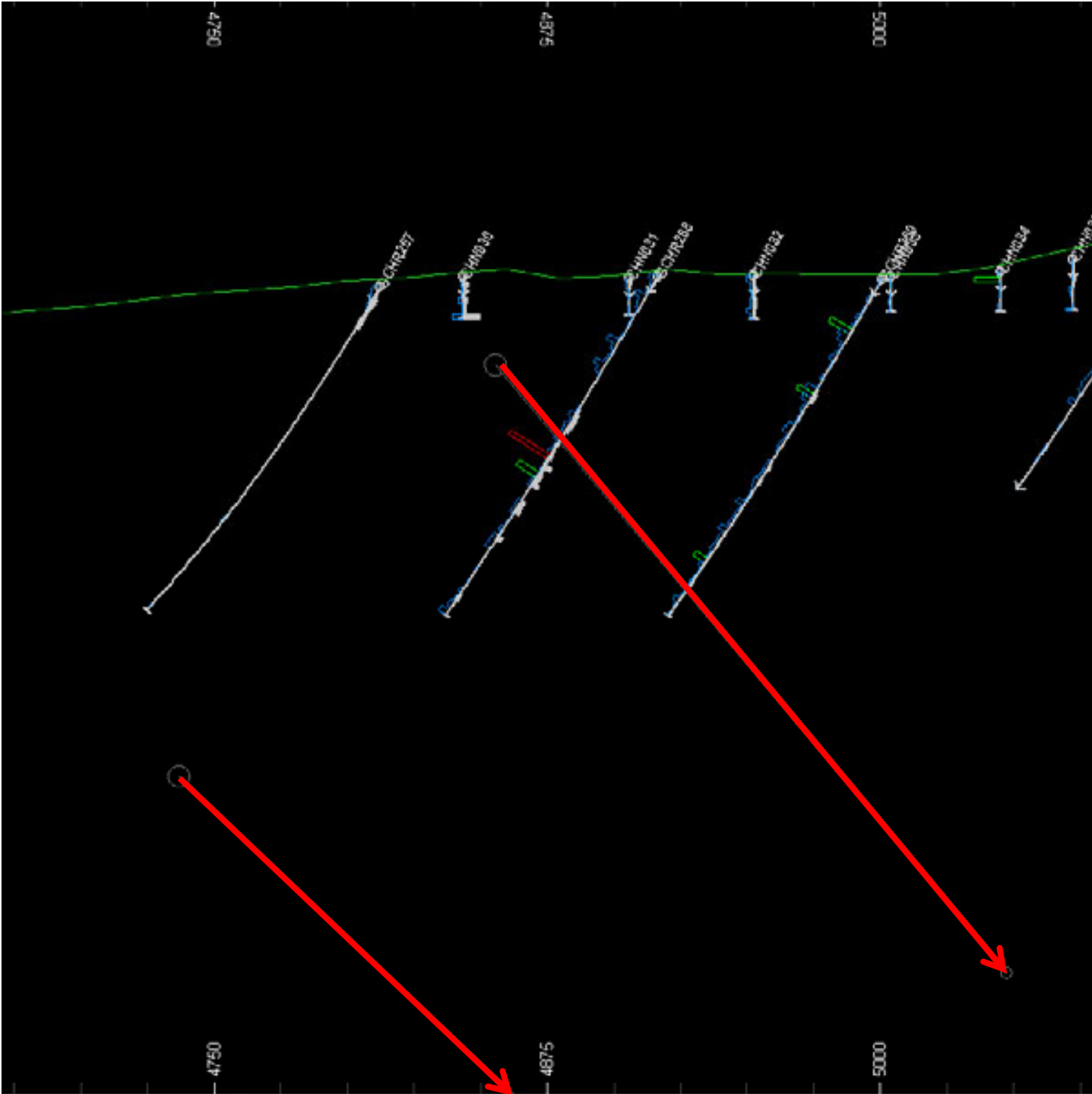
6100N



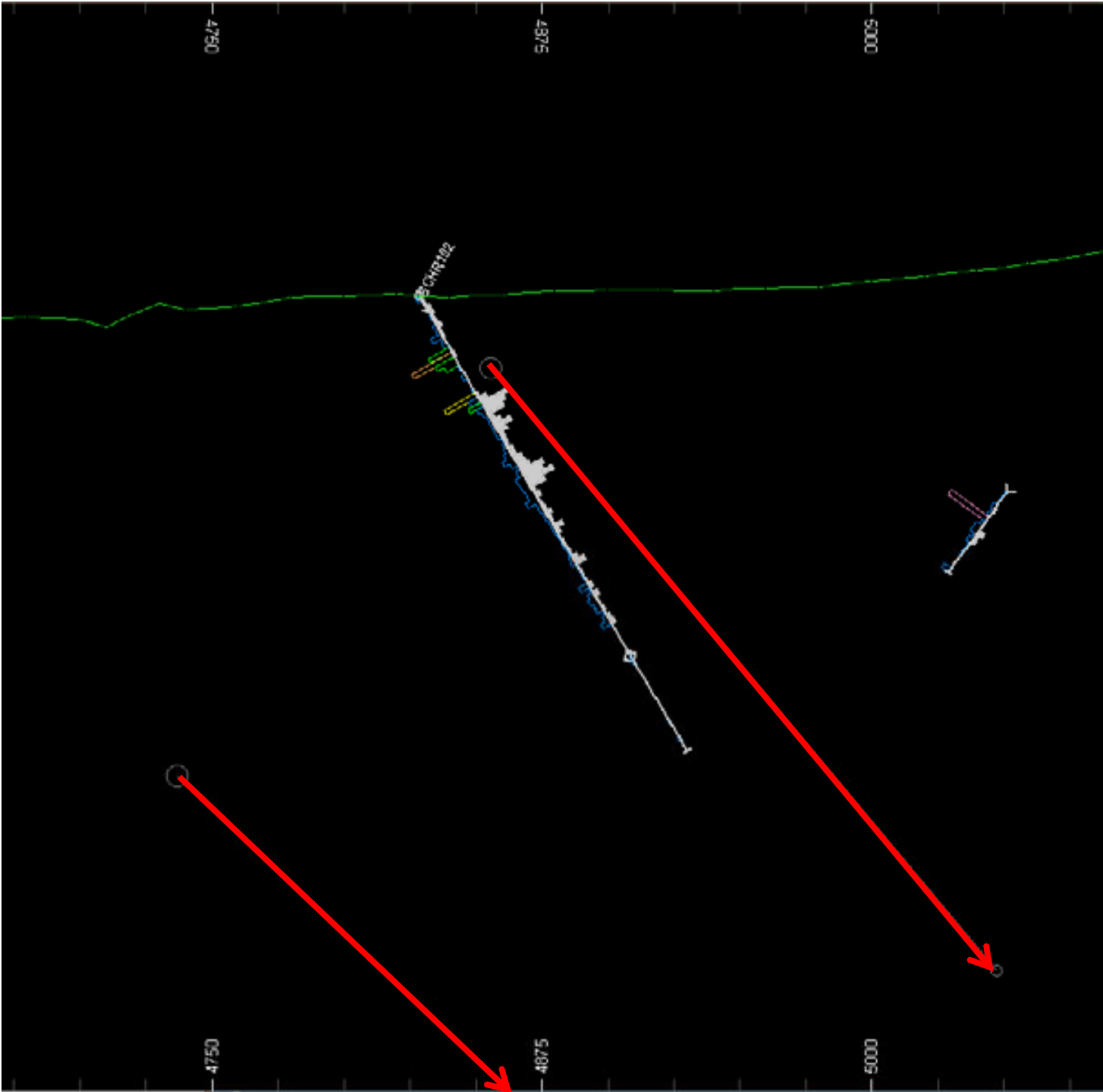
6150N

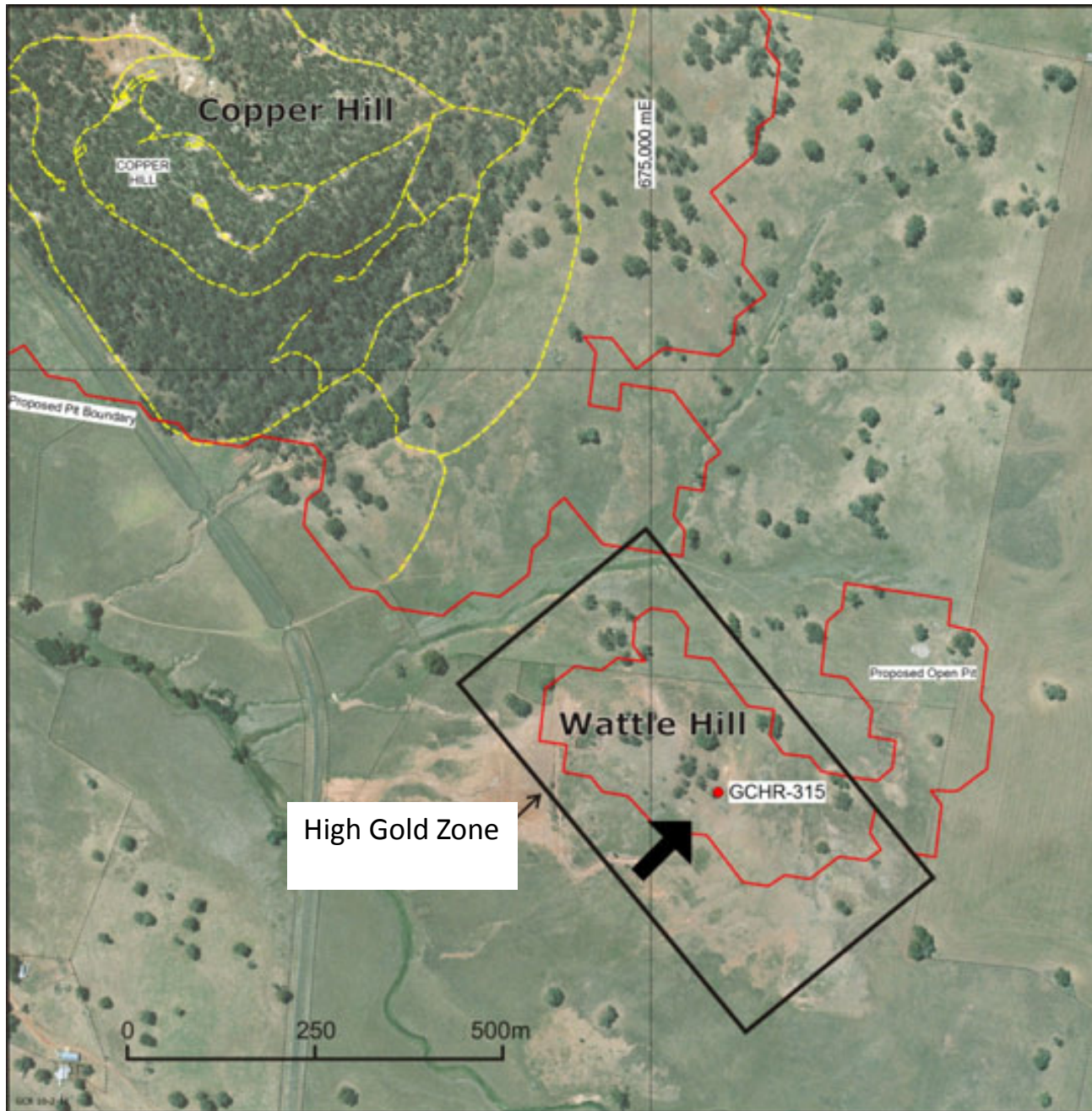


6200N

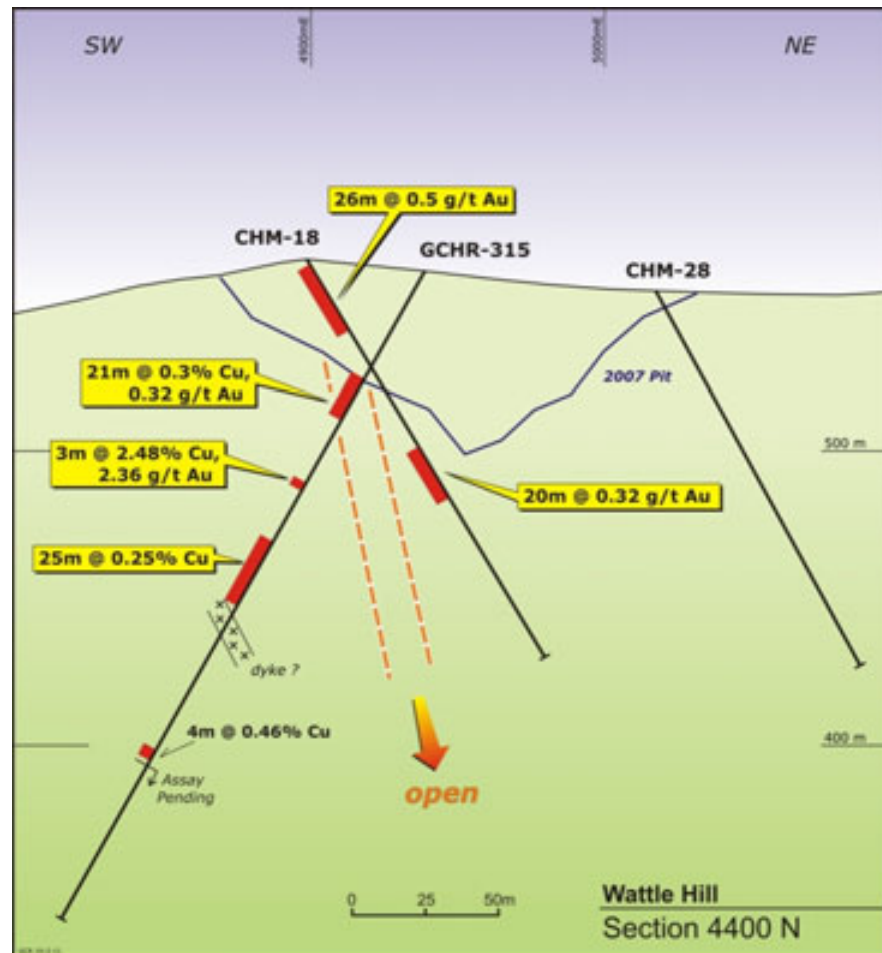


6250N

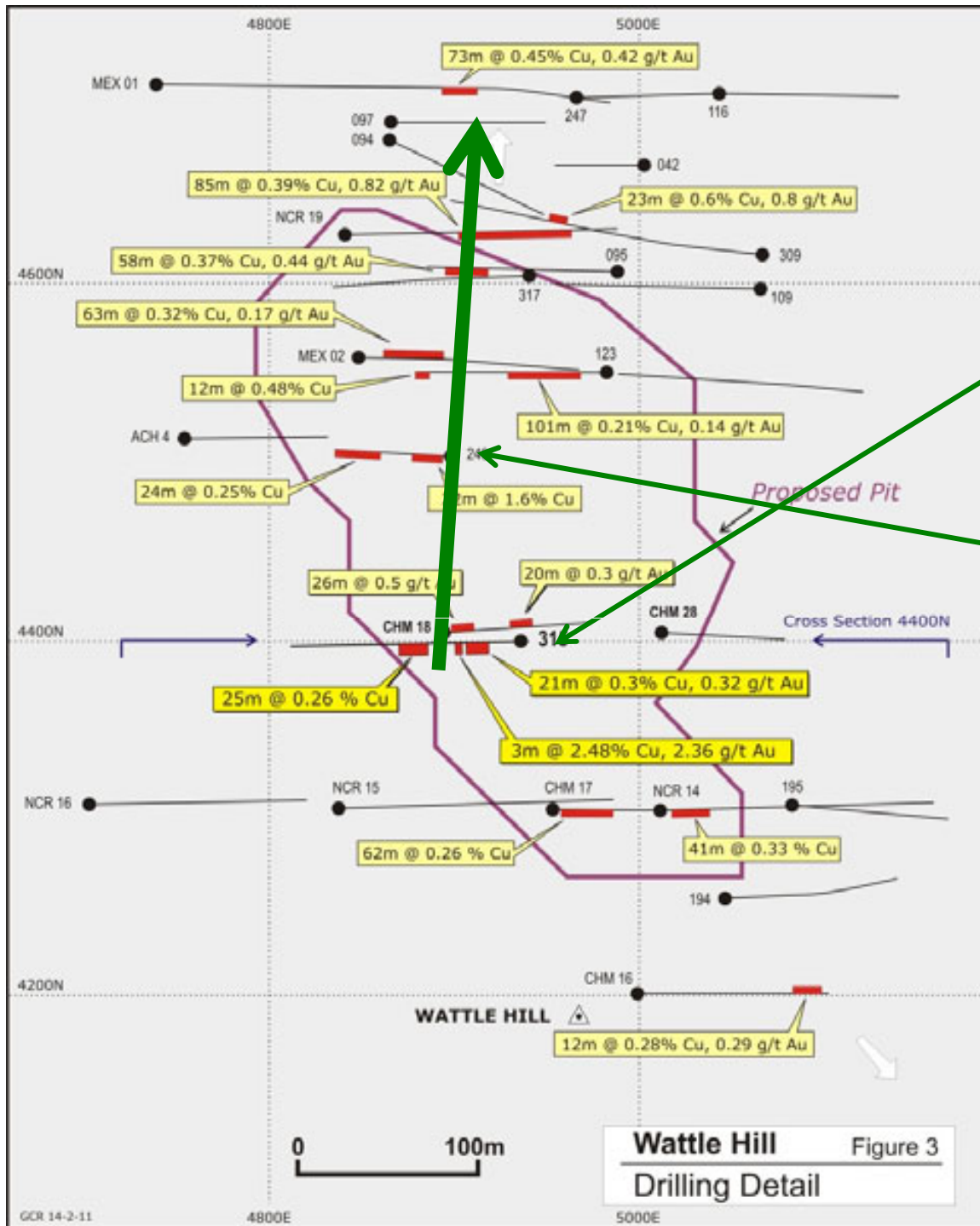




Wattle Hill – follow-up drilling 2011



WATTLE HILL DRILLING



- **GCHR315** confirms and extends the intercepts in drill hole **CHM18** of **26 metres @ 0.5g/t gold** from 2 metres and **20 metres @ 0.32g/t gold** from 74 metres.
- The **3m @ 2.48% copper** at 82 metres down-hole may correlate with the zone of **8m @ 3.72% copper** in **GCHR249**, located 100m northwest on section 4500N.
- This zone may plunge further towards and beneath Copper Hill
- Strike extensive zones of +1% copper could lie between Wattle Hill and extend beneath the current optimised Copper Hill open pit.

The Copper Hill Resource at a cut-off grade of 0.2% copper

Note: The Measured, Indicated and Inferred Resource Estimates are reported under the 2004 JORC Code and Guidelines.

Search parameters for the categories as follows:

Measured = 40m x 45m x 40m (min 12 data);

Indicated = 60m x 65m x 60m (min 10 data);

Inferred = 100m x 110m x 100 (min 6 data)

Class	Tonnes (Mt)	Copper (%)	Gold (g/t)	Contained Copper (Kt)	Contained Gold (M oz)	% of Tonnes
Measured	75	0.342	0.324	258	0.79	43
Indicated	64	0.292	0.227	186	0.46	37
Inferred	34	0.273	0.200	91	0.22	20
Total	173	0.31	0.26	535	1.47	100

Primary mineralisation comprises 96% of the resource (tonnage) with 2% supergene and 2% oxide copper, as shown below:

The resource estimates were performed using ordinary kriging, constrained above and below the base of oxidation and either side of the Western Fault, but otherwise unconstrained. The different mineralisation types and rock densities, as well as the orientation of the primary mineralisation domains, were determined from the GCR geological interpretation. Block densities were modelled using the results from 525 samples taken of drill core

Zone	Tonnes (Mt)	Copper (%)	Gold (g/t)	Contained Copper (Kt)	Contained Gold (M oz)	% of Tonnes
Primary	166	0.309	0.265	512	1.41	96
Transition	3	0.351	0.267	12	0.03	2
Oxide	4	0.296	0.243	11	0.03	2
Total	173	0.31	0.26	535	1.47	100

***Copper Hill : Comparative Resources & Grades
New South Wales copper-gold deposits***

	TOTAL Measured, Indicated & Inferred				
Deposit	Tonnes MT	Cu%	Au gpt	Copper MTonnes	Gold Moz.
Cadia Hill OC	408	0.12%	0.42	0.49	5.5
Cadia Extended	83	0.20%	0.35	0.16	0.9
Ridgeway UG	155	0.38%	0.73	0.58	3.6
Big Cadia	42	0.40%	0.38	0.17	0.5
Cadia East UG	2,347	0.28%	0.44	6.59	33.2
CVO				7.99	43.7
Marsden NSW	224	0.32%	0.17	0.72	1.2
North Parkes	153	1.03%	0.46	1.57	2.2
Copper Hill	173	0.31%	0.26	0.53	1.47
Cowal	129		1.0		4.1
MacPhillamys	92	0.07%	1.0	0.06	2.9

Experienced Development Team

- Mark Moddejongen, a highly experienced mining engineer is Project Manager.
- Mine development geologist Richard Lewis.
- Shu Zhang and John Chen, two very experienced mining engineers.
- Ken Kellett is supervising metallurgical work at Metcon Laboratories.
- Bret Ferris is Exploration Manager, Chris Johnston is Site Geologist



Hydrology & Geotechnical

- Hydrology – local aquifers identified. Aquaterra retained for hydrology and environmental studies.
- PSM supervising on-going geotechnical programs including geotechnical holes, geotechnical domain classification & final wall slope recommendation for each domain



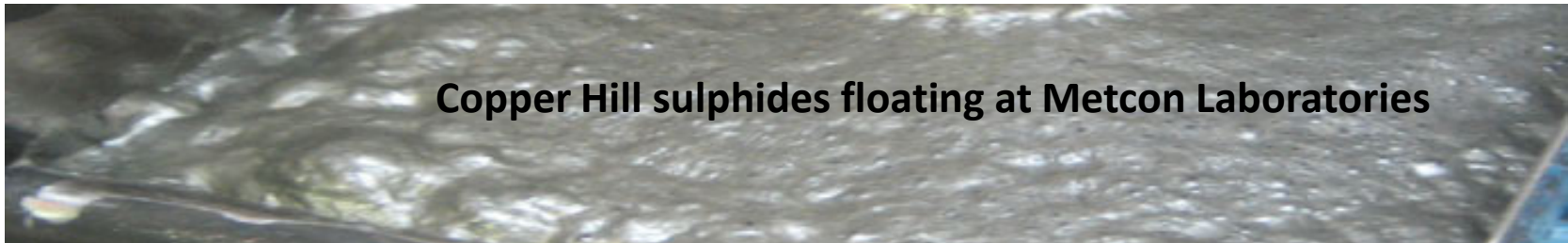
Production of a Copper-Gold Sulphide Concentrate 25% copper with 15 to 20g/t gold achievable

- Earlier Start-up
- Lower capital costs
- China-sourced equipment and technology
- Faster track to Production and Cash Flow
- Construction time will be greatly reduced.
- The capital cost will be much lower and more 'bankable'.
- Standard equipment should be deliverable with lead-times within the desired mine plan timetable.



Assessment of capital cost items for the Copper Hill project.

- Cost savings realised by sourcing much of the crushing-grinding-flotation-filter equipment from China will be 30% to 40% lower than earlier estimates.
- GCR will proceed down the 'standard' route of producing a copper-gold concentrate for sale to smelters.
- Metallurgical considerations are always important but for Copper Hill are now critical as GCR examines ways to extract the last additional gold held in the pyritic tails. Test-work is continuing at Metcon.



Project Financing

- Cornerstone Chinese and Australian Investors
- Feasibility Study: aiming for end-2011
- Equity & Chinese Loans

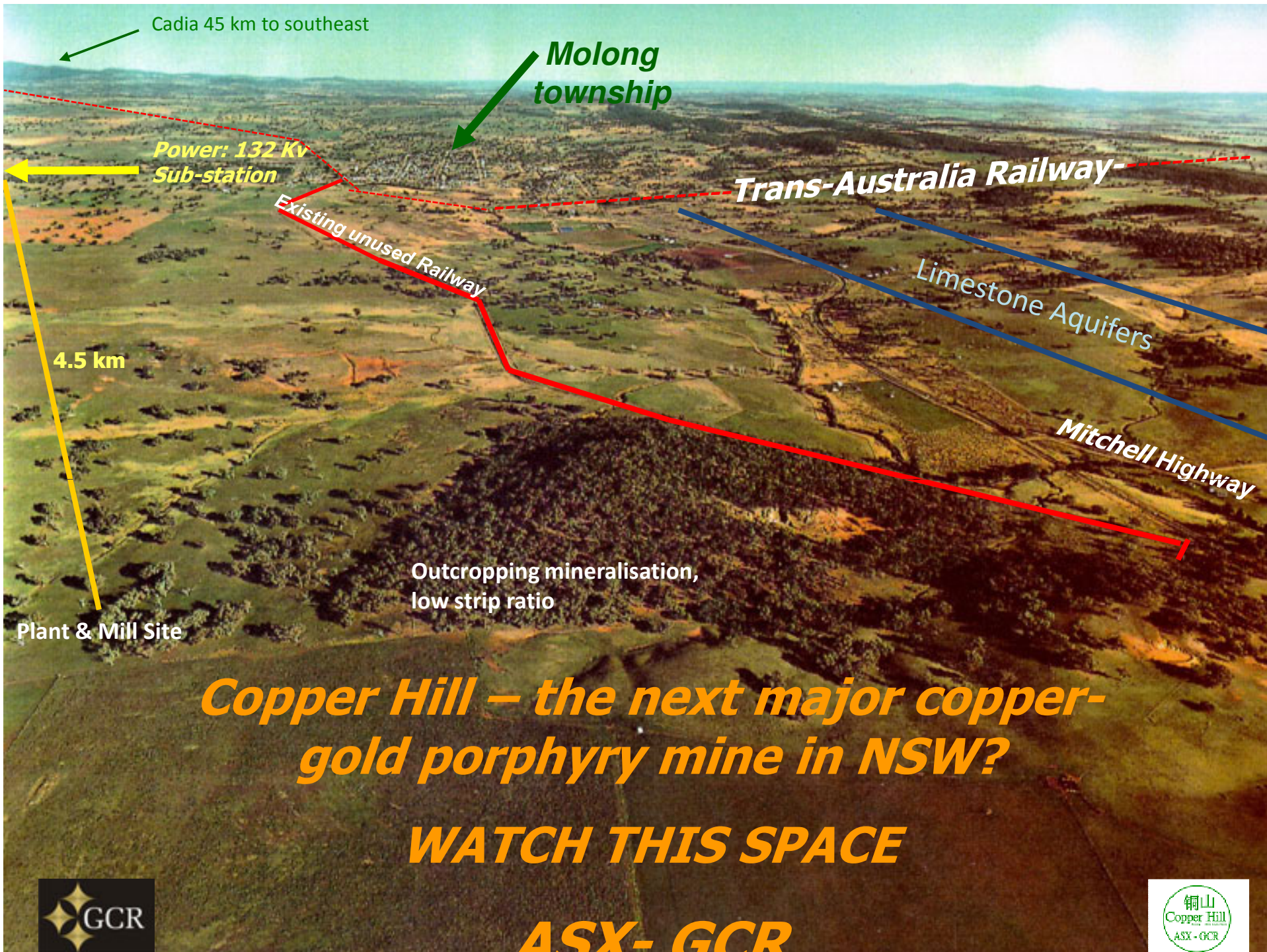
Copper Hill Mine - Critical Issues

- Preliminary pit designs, waste dumps and tailings dam in progress
- Metallurgy and Processing test-work continuing

Under consideration:

- Capex & Financing
- Property purchases
- Water entitlements
- Regulatory approvals





Cadia 45 km to southeast

Molong township

Power: 132 Kv Sub-station

Trans-Australia Railway

Existing unused Railway

Limestone Aquifers

Mitchell Highway

4.5 km

Outcropping mineralisation, low strip ratio

Plant & Mill Site

Copper Hill – the next major copper-gold porphyry mine in NSW?

WATCH THIS SPACE

ASX- GCR





Key Points in Summary:

Copper Hill remains

the focus of the Company.

All efforts to bring it into production

as soon as possible are being made